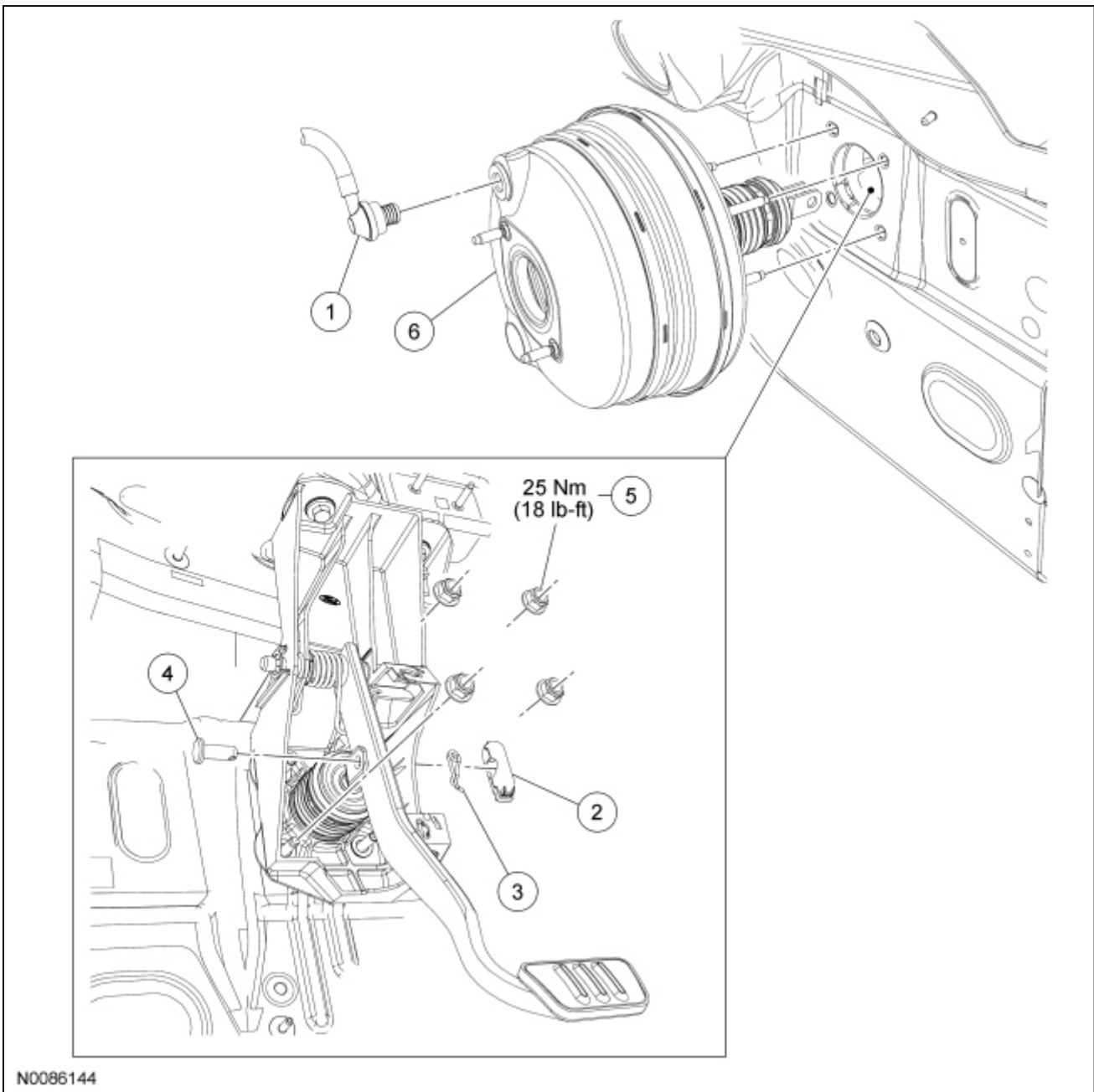


Brake Booster



Item	Part Number	Description
1	2365	Brake booster vacuum check valve
2	2475	Redundant self-locking clip cover
3	380699	Self-locking clip
4	2N513	Brake booster rod pin
5	W520112	Brake booster nut (4 required)
6	2B195	Brake booster

Removal and Installation

Vehicles equipped with 5.4L engines

1. Remove the suction accumulator. For additional information, refer to [Section 412-01](#).

All vehicles

2. **NOTICE:** The brake booster check valve must be disconnected from the brake booster prior to removing the master cylinder or the master cylinder seal may be drawn into the brake booster.

Disconnect the brake booster check valve from the brake booster to deplete the residual vacuum in the brake booster.

3. Remove the brake master cylinder. For additional information, refer to [Section 206-06](#).
4. **NOTICE:** Do not service the brake pedal or brake booster without first removing the stoplamp switch and speed control deactivator switch. These switches must be removed with the brake pedal in the at-rest position. Switch plungers must be compressed for the switch to rotate in the bracket. Attempting to remove the switch when the plunger is extended (during pedal apply) will result in damage to the switch.

Remove the stoplamp switch. For additional information, refer to [Section 417-01](#).

5. If equipped, remove the speed control deactivator switch. For additional information, refer to [Section 310-03](#).
6. Remove the redundant self-locking pin cover, self-locking pin and the booster rod pin.
7. Remove the 4 brake booster nuts.
 - To install, tighten to 25 Nm (18 lb-ft).
8. Remove the brake booster assembly from the vehicle.
9. **NOTICE:** Do not press, pull or otherwise move the brake pedal while installing the stoplamp switch or the speed control deactivator switch. These switches must be installed with the booster push rod attached to the brake pedal and with the brake pedal in the at-rest position. Installing these switches with the brake pedal in any other position will result in incorrect adjustment and may damage the switches.

To install, reverse the removal procedure.
